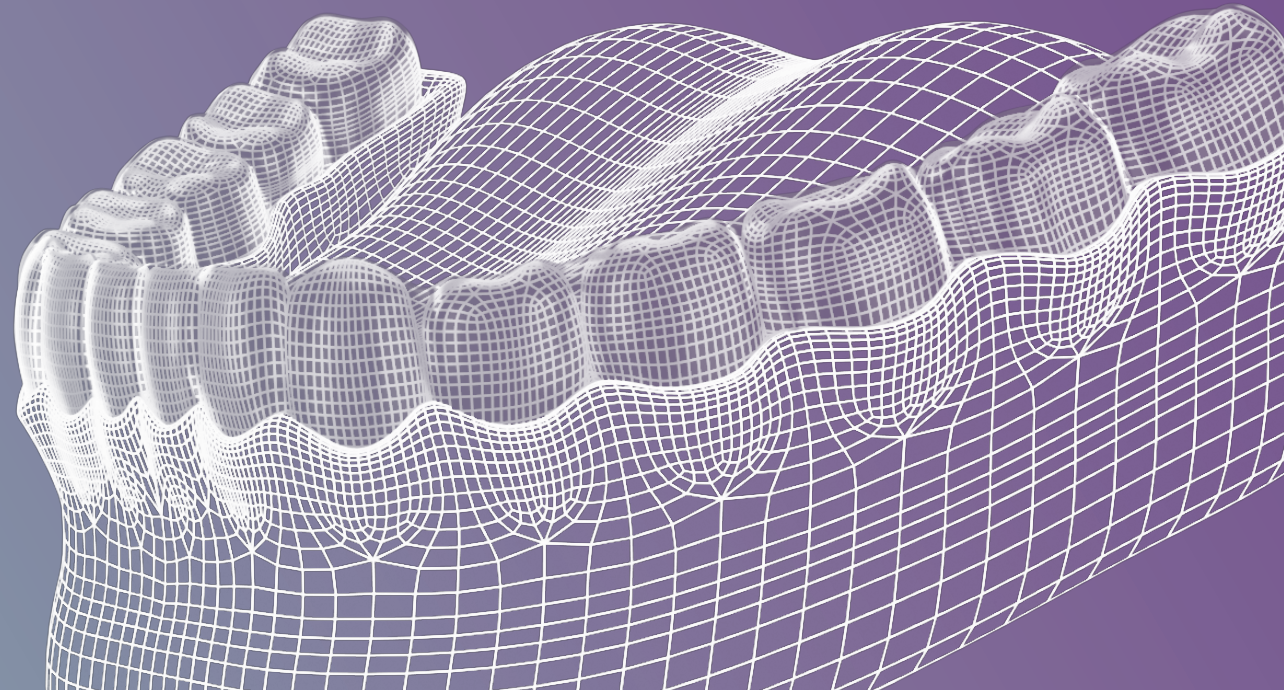




Xflow AI Service Configurations Help Guide

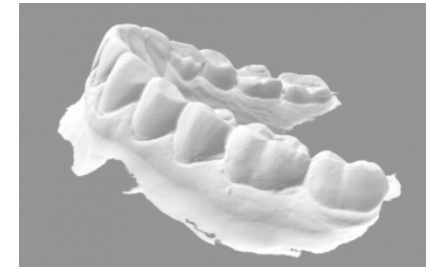
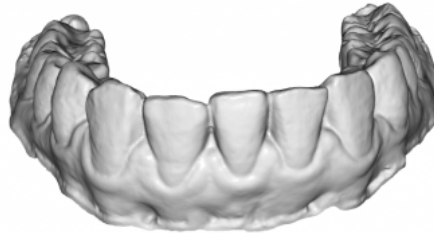
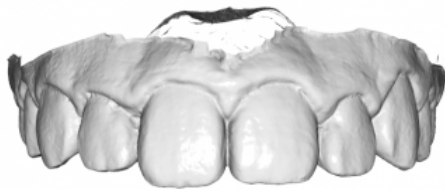


What doesn't process well?

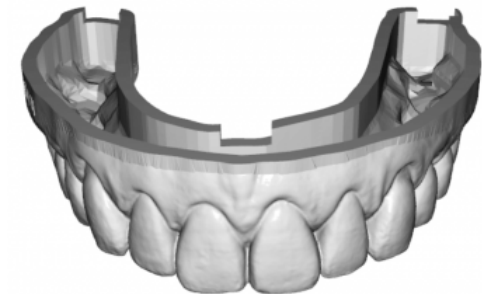
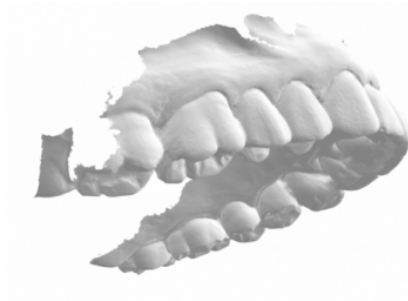
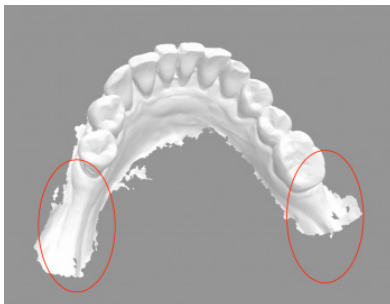


- Large Files over 40MB
- Poor Quality Scans
 - Missing Scan Data
 - Missing multiple teeth
 - Extra Scan Artifacts
- Quadrat Scans (need to be full arches)
- Bands & Wires (still 95% success rate)

What Good Cases Looks Like



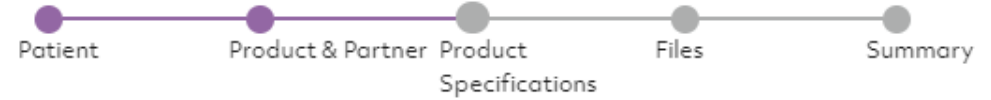
What Bad Cases Looks Like



Retainer and Digital Model AI Settings



Create New Order | Product Specifications



Product type & partner

Retainer

Xflow AI

AI Designs

Design Services

Automatic Bracket Removal



This must be enabled if your patient had braces upon scanning. This cleans up the scan so that it can be model based and trim path applied

Automatic Model Basing

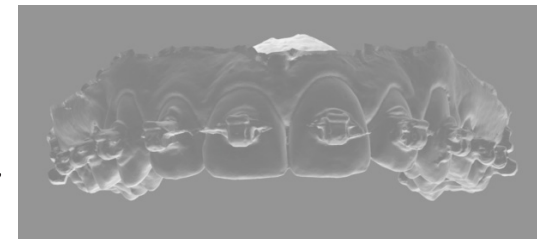


This must always be enabled when using automated trim path generation

Remove Molar Gingiva



Remove the excess gingiva tissue behind the molars



Trim Horseshoe

Trim Margin (0.1mm - 6.0mm)

Base Margin (0.1mm - 10.0mm)

Base Hollow

Base Thickness (2.0mm - 3.0mm)

Base Drain Height (0.5mm - 3.0mm)

Base Drain Width (3.0mm - 10.0mm)

Base Label

Base Side Label

Base Block Label

Base Z Axis Aligned

Base Extrude Palate

Base Bevel

Base Keep Occlusion

1 Toggle on for Horseshoe or off for full palate

2 Width of the gingival tissue

3 Height of the added base material

4 Related to hollow bases: width of the wall of the base 5mm is essentially a solid base

5 This relates to the height of drain holes used to drain out resin (can not be applied to solid bases)

5 This relates to the width of drain holes used to drain out resin (can not be applied to solid bases)

Defines what is printed (Filename prints STL file name). Will be placed on the bottom.

Hollow models must have side labels (see next page for more info on labels)

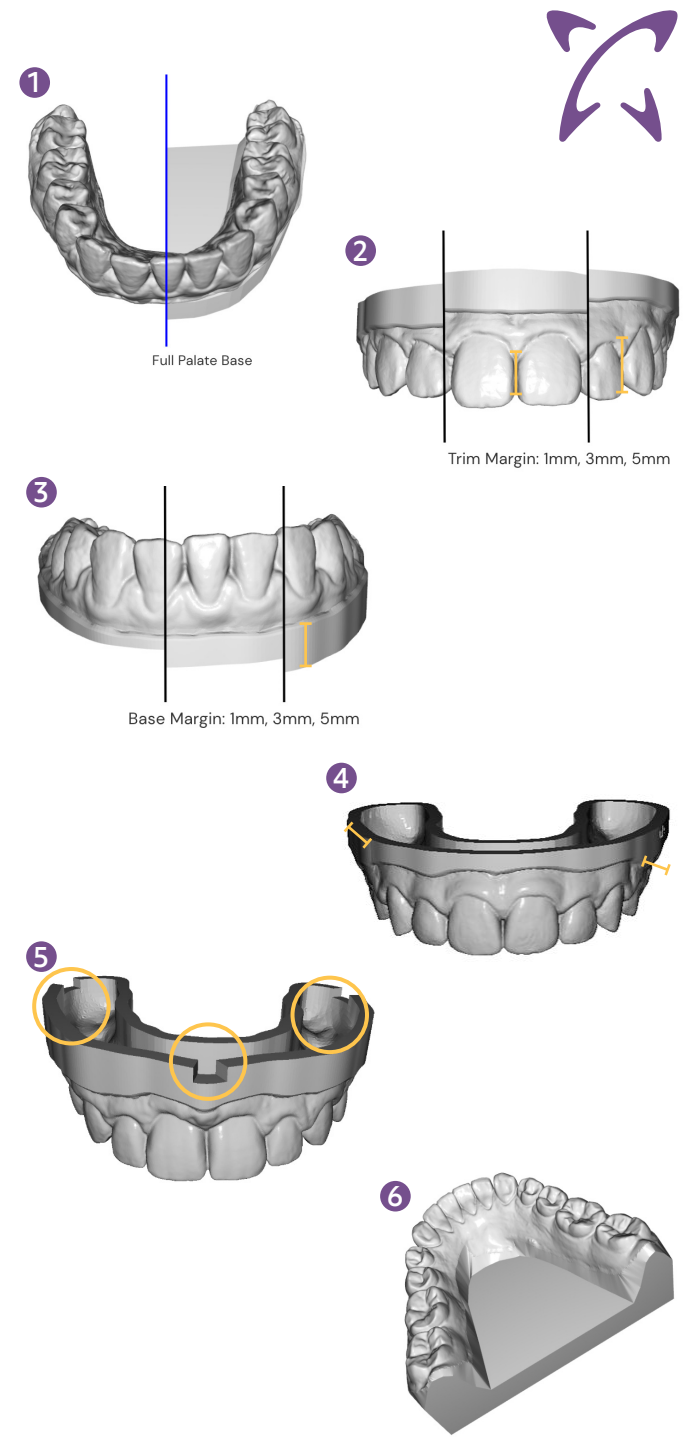
If less than 8 characters, this will be place in the center of the model, if more it'll place on the side

Optimal for 3D printing, sets Z axis for 0

6 Creates a flat back at edge of the base

Adds a transition edge between the gingival tissue and the added base (if not selected, there will be a smooth transition between these two)

If this is selected, it does not rotate model to minimise resin usage (won't set Z to 0)



● See next page!



Automatic Trim Path

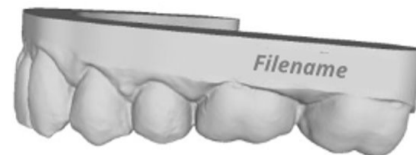
Automatic Trim Path Generation	<input checked="" type="checkbox"/>	Enable this to activate automated Trim path generation (relates to LAC)
OCR Block Label	<input type="checkbox"/>	Enable to have base printed for automatic job recognition capability with LAC
Scalloped Trim Path	<input checked="" type="checkbox"/>	When not enabled, trimpath will remain straight
Trim CNC Margin (0.5mm - Trim Margin)	<input type="text" value="2"/>	The lower this is, the closer the trim path will be to the teeth
Include Normal Vector	<input checked="" type="checkbox"/>	Vector points that tells the machine where to cut which essentially creates optimal points. Recommend on unless having viewing issues
Preserve Molars	<input checked="" type="checkbox"/>	On if the trim path should go around the back of the molar. Off if the trim path should go through the middle of the molar. Default value is off
Molars Edge Distance	<input type="text" value="2.5"/>	Distance from the gingival margin of the molar the trim path should be routed. Only applied if Preserve Molar is on. Recommended value: 2.5mm (How close do we get to the gingival tissue)

Labeling Options

Base (Bottom) Label



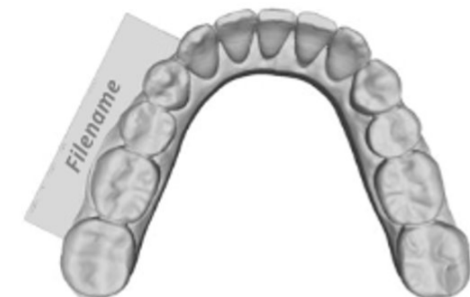
Base Side Label



Base Block Label (Center)



Base Side Label



If less than 8 characters, this will be place in the center of the model → if more it'll place on the side



Create New Order | Product Specifications



Product type & partner

**Aligner
Trimline**

Xflow AI

AI Designs

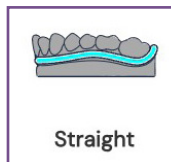
Design Services

Trimpath Type

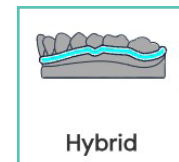
STRAIGHT

HYBRID

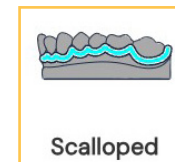
SCALLOPED



Straight



Hybrid



Scalloped

Trim Margin (0.1mm - 6.0mm)

2

Width of the gingival tissue

Preserve Molars

On if the trim path should go around the back of the molar. Off if the trim path should go through the middle of the molar. Default value is off

Trimpath Molar Height (-1.0mm - 3.0mm)

1

Distance from the gingival margin of the molar the trim path should be routed. Only applied if Preserve Molar is on. Recommended value: 2.5mm (How close do we get to the gingival tissue)